


**CeBIT**
**HANNOVER**  
**3-8 MARCH 2009**  
**cebit.com**
**Experience innovation.**

 Visit us at CeBIT in Hanover,  
 from 3rd to 8th March 2009, Hall 17, Stand C06!

**Flexibility from the word go**

## Contactless Readers Type 880, 881 and 882

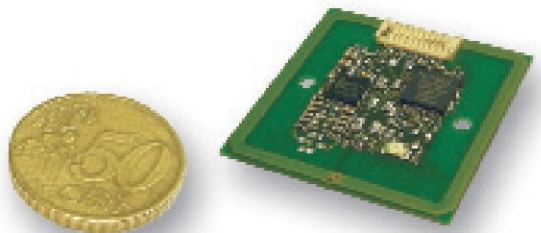
You will be well equipped to deal with all sorts of applications using the contactless readers from ddm hopt-schuler. They can handle all the common card protocols and can be combined easily with other readers from ddm. Thanks to varied antenna designs and space-saving dimensions, the readers are very flexible and can be used in such applications as access control systems, tollbooths and payment terminals, to name but a few.

### Details at a glance:

- Customised configuration
- Can be combined with magnetic, chip and hybrid card readers from ddm
- Support for contactless cards according to ISO 14443 (A,B,T=CL), Mifare-Family, ISO 15693, I-Code
- Interfaces:  
 Typ 880 = RS232, RS485,  
 Typ 881 = serial, SPI,  
 Typ 882 = RS232, USB, TCP / IP (Ethernet) I2C



Hybrid card reader combined with a contactless reader



Installation friendly thanks to compact design

**ddm**  
**hopt+schuler**  
 reading signs. setting signs.